

The Wrecks



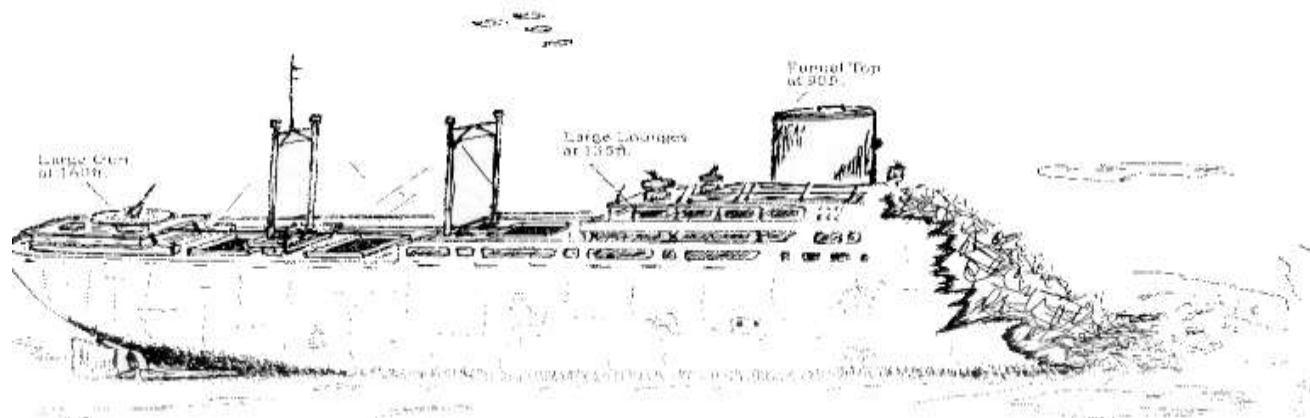
The Aikoku Maru

The Aikoku Maru is a large combined freighter/passenger liner, resting on an even keel. The holds are empty and the Midship superstructure has collapsed. Penetration of this wreck is strongly discouraged. The first hold aft held troop quarters but has been cleared of the remains. A large anti-aircraft gun is located on top of the aft deckhouse.



Depth		
Superstructure	130 ft.	40 m
Deck	160 ft.	49 m.
Bottom	210 ft.	64 m.

Size		
Length	498 ft.	150 m.
Gross Tonnage:	10,437 tons	



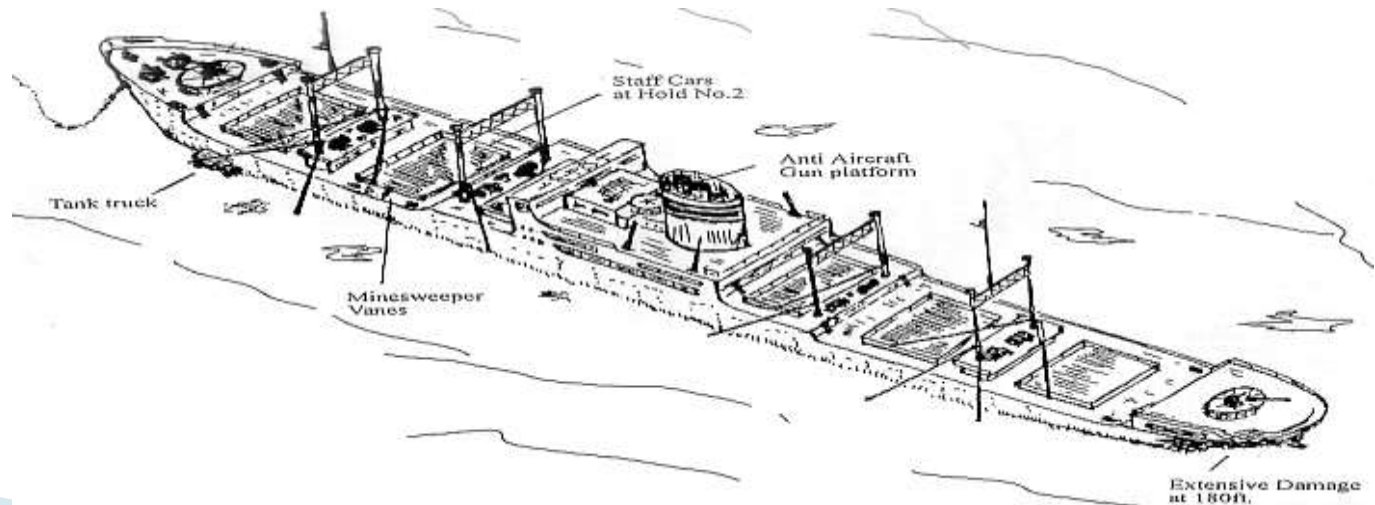
The Amagisan Maru

A combined passenger/cargo ship, the Amagisan Maru suffered torpedo and bomb damage. It lies on sloping bottom with the stern deeper than the bow. Hold #2 contains a car and other cargo and there is a photogenic bow gun. The superstructure and particularly the pilot house area is interesting to explore.



Depth		
Superstructure	100 ft.	31 m.
Deck	120 ft.	37 m.
Bottom	200 ft.	61 m.

Size		
Length	450 ft.	136 m.
Gross Tonnage:	7,620 tons	



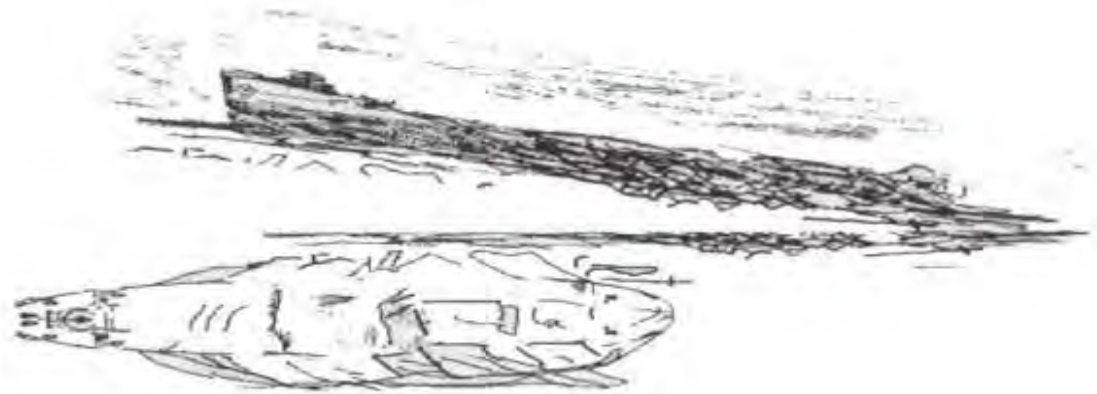
The Dai Na Hino Maru One Gun Boat

Years ago when you saw a poster for Truk Lagoon, this small freighter was the featured wreck. The bow gun was the most recognizable part of the wreck and snorkelers could easily glide under the gun while posing for great photos. The ship was hit by two large bombs and most of it is demolished.



Depth		
Superstructure	3 ft.	1m.
Deck	30 ft.	9 m.
Bottom	70 ft.	21 m.

Size		
Length	200 ft.	60 m.
Gross Tonnage:	998 tons	



The Fujikawa Maru

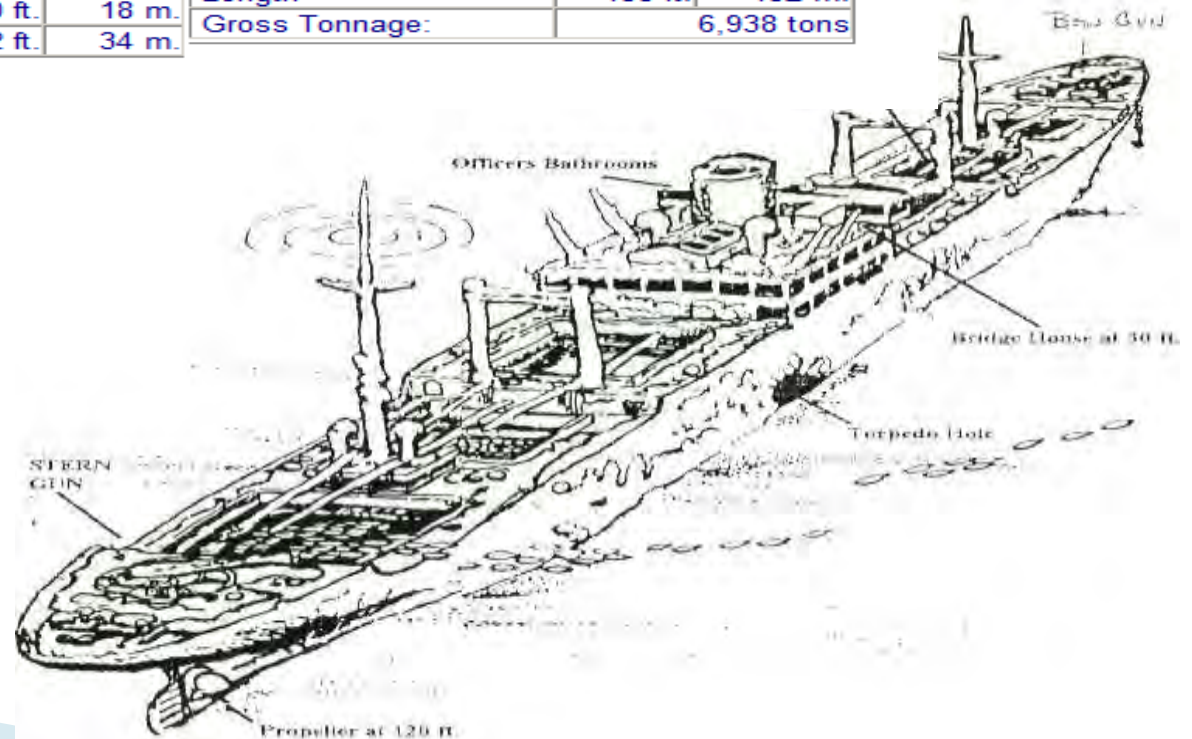
The most popular wreck in Truk Lagoon, the Fujikawa Maru is a must dive. Whether your interest is in artifacts or marine life this wreck has it. An abundant growth of soft & hard corals, anemones, & crinoids make the ship & particularly the bow & stern guns very photogenic. All the holds contain cargo but a unique attraction lays in hold #2. There you will find five relatively untouched and intact Zero fighters. The engine room is very interesting but requires special diving skills to visit.



Depth		
Superstructure	30 ft.	9 m.
Deck	60 ft.	18 m.
Bottom	112 ft.	34 m.

Size		
Length	433 ft.	132 m.
Gross Tonnage:	6,938 tons	

Details: Sits upright



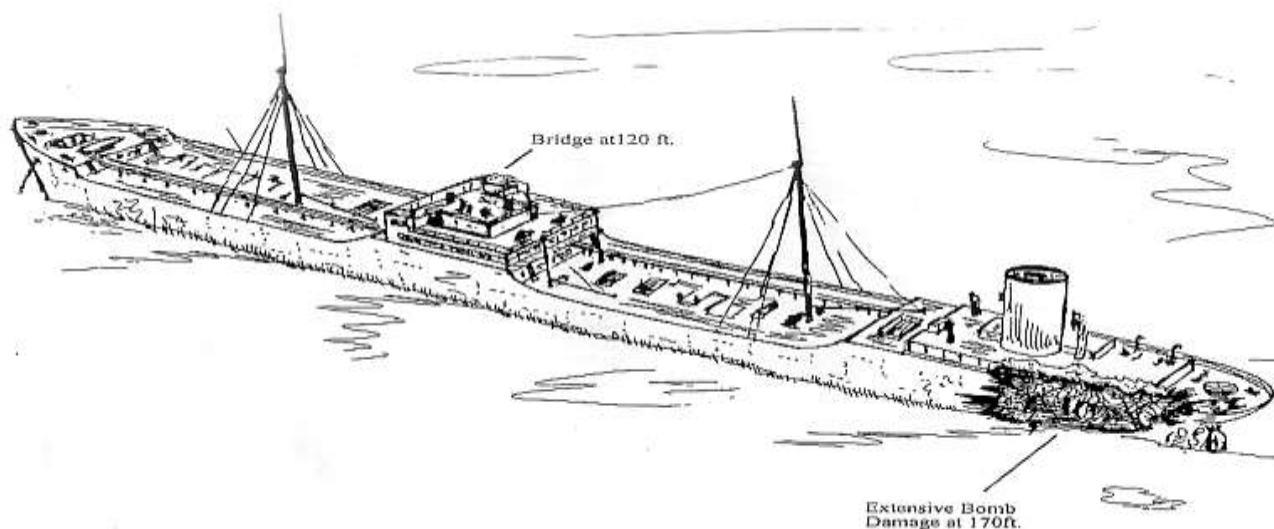
The Fujisan Maru

The Fujisan Maru is rarely visited because of the depth. Depth to the shallowest part is the mid-ship railing at 115 feet. There isn't much marine growth except some coral and sponge which appears on the railings, pipe bridge and lifeboat davits.



Depth		
Superstructure	120 ft.	37m
Deck	150 ft.	46 m
Bottom	170-200 ft.	52-61 m

Size		
Length	493 ft.	149 m.
Gross Tonnage:	9,524 tons	



Fumizuki



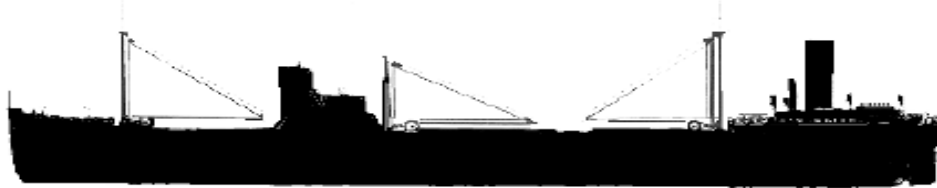
Fumizuki

Bottom Depth 36.1 m

Size

The Gosei Maru

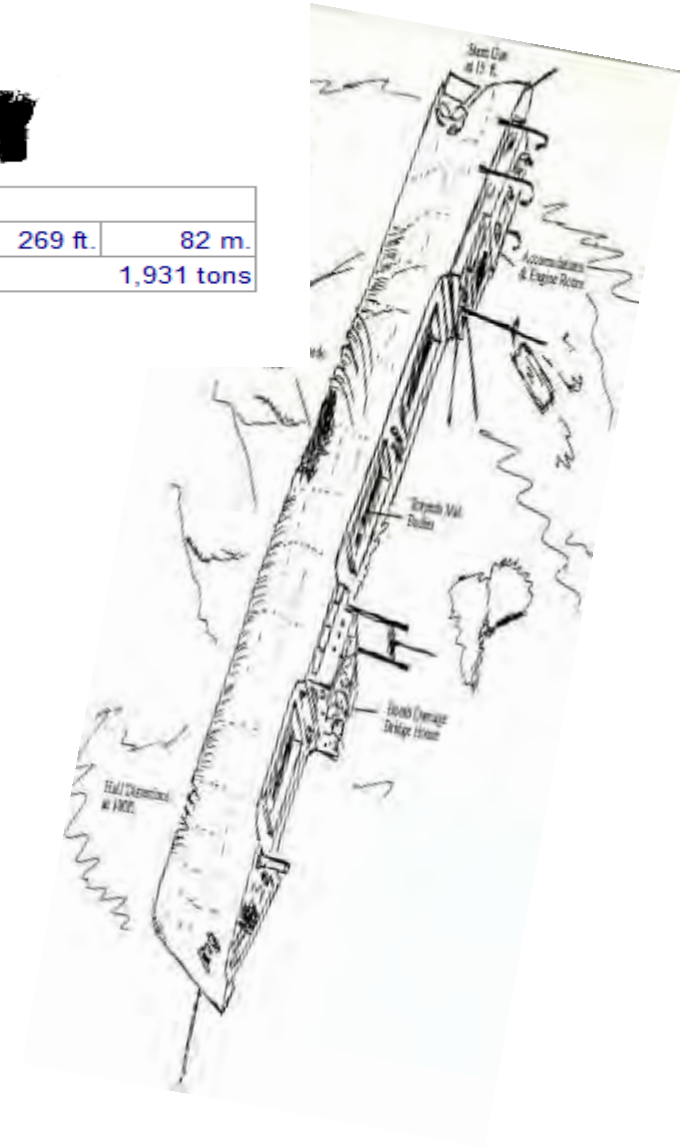
The Gosei Maru is also known as the "Stern-High Wreck". The depth ranges from 8 feet at the stern to 100 feet at the bow. The propeller and rudder area on this ship can occupy a photographer for an entire dive! Artifacts discovered on this wreck include sake and beer bottles along with beautiful china pieces. Torpedo bodies and separate warheads can be found in some of the holds.



Depth		
Hull	8 ft.	2.5 m.
Bottom	100 ft.	31 m.

Size		
Length	269 ft.	82 m.
Gross Tonnage:	1,931 tons	

Details: Resting almost on her port side about 200 yards off shore from Uman Island.



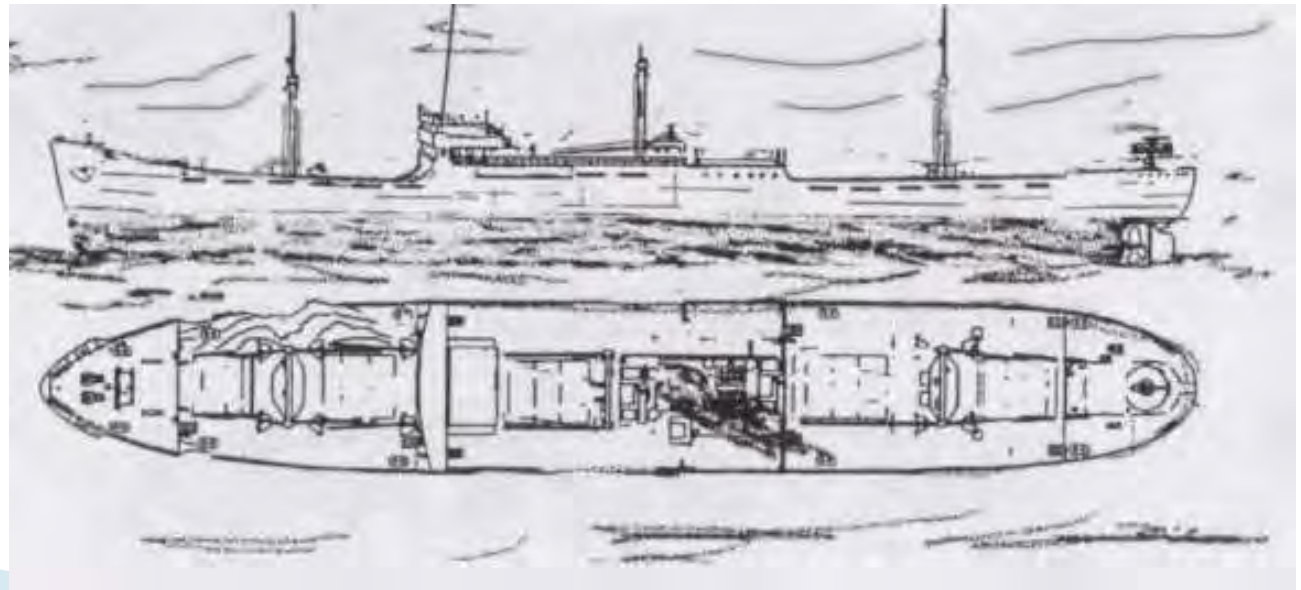
The Hanakawa Maru

The Hanakawa Maru was loaded with a cargo of aviation gas and was set on fire by a torpedo. Traces of fire damage can be seen on the bridge. This ship is located a few hundred yards from shore near the south east end of Tol Island. Marine growth, hard and soft corals & fan corals are thick here. A telegraph can be found near the center top of the bridge superstructure. There are a fair amount of artifacts still on the ship.



Depth			Size	
Superstructure	50 ft.	15 m.	Length	367 ft./112 m.
Deck	75 ft.	23m.	Gross Tonnage:	4,739 tons
Bottom	110 ft.	34 m.		

Details: Resting upright on an even keel in moderate depth.



The Heian Maru

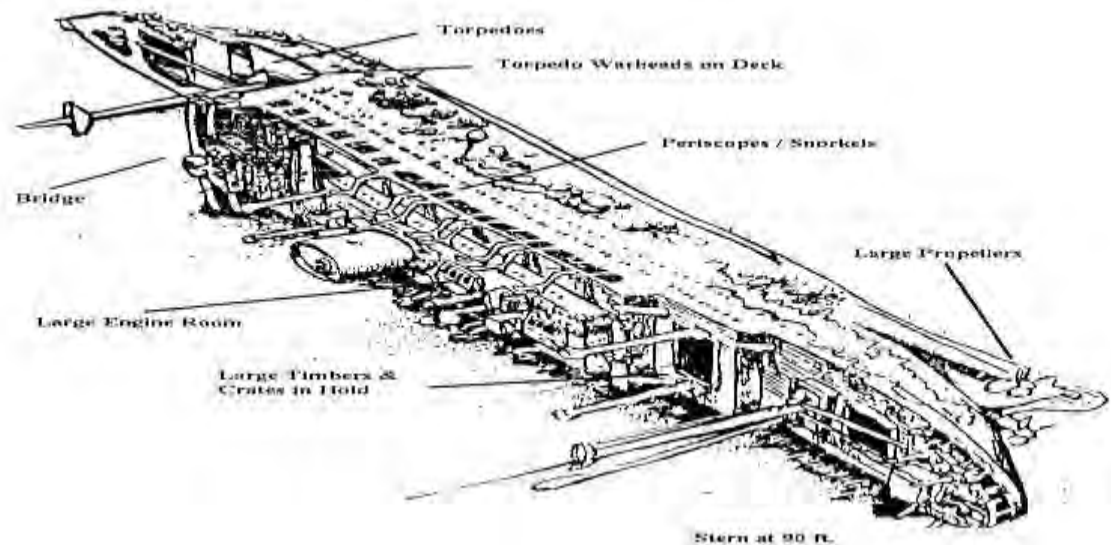
This former passenger/cargo luxury liner was converted to use as a submarine tender. Lying on its port side, its name, in both Kanji & English characters, is a great photo opportunity. Entering the forward hold through the specially modified hatch cover over one dozen 24 in./60 cm. diameter Long Lance torpedoes can be found. Periscopes lay in two companionways on levels below & aft of the bridge. Many artifacts can be found throughout this wreck.



Depth		
Hull	40 ft.	12 m.
Bottom	120 ft.	36 m.

Size		
Length	509 ft.	155 m.
Gross Tonnage:	11,614 tons	

Details: Lying on her port side between Moen and Dublon Islands.



The Kiyuzumi Maru

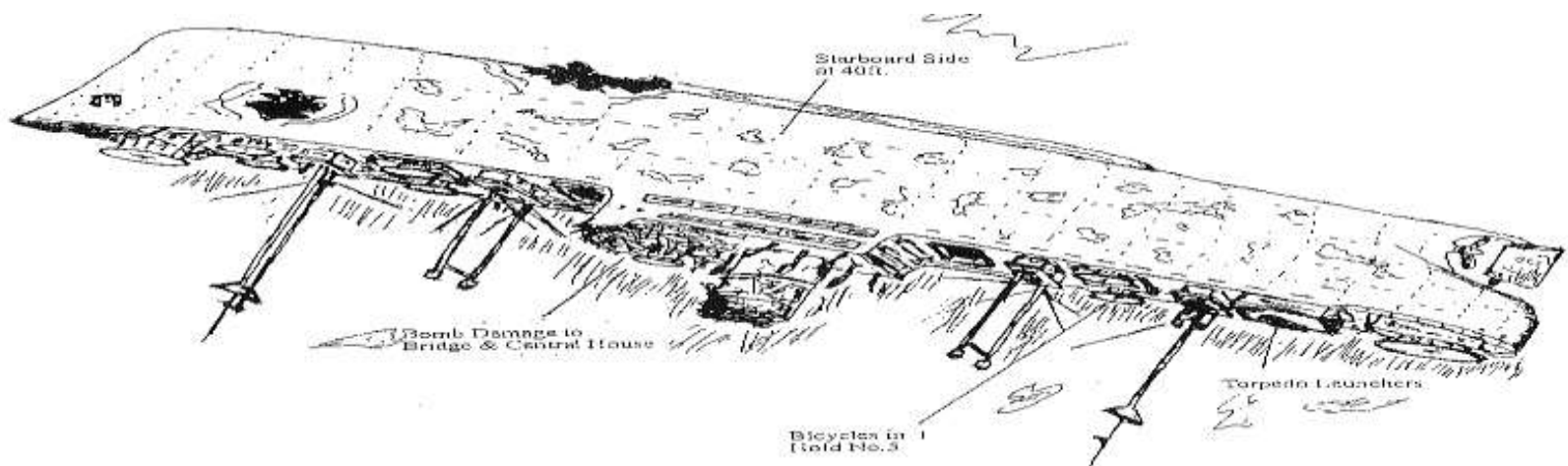
The Kiyuzumi Maru rests on the port side. It's worthwhile to talk to the guides before diving this ship. It would be easy to miss some of the more interesting features. The depth ranges from 40-100 feet. Most of the exterior is covered in algae and coral. There is a small lantern locker containing bronze lanterns and lantern parts on shelves. Access into the lower deck is possible through a rear entrance at deck level. China and pots have been seen on this wreck.



Depth		
Superstructure		
Deck	40 ft	12 m.
Bottom	100 ft.	31 m.

Size		
Length	50 ft.	137 m.
Gross Tonnage:		3,833 tons

Details: Resting almost evenly on her port side about 600 yards from Fefan Island.

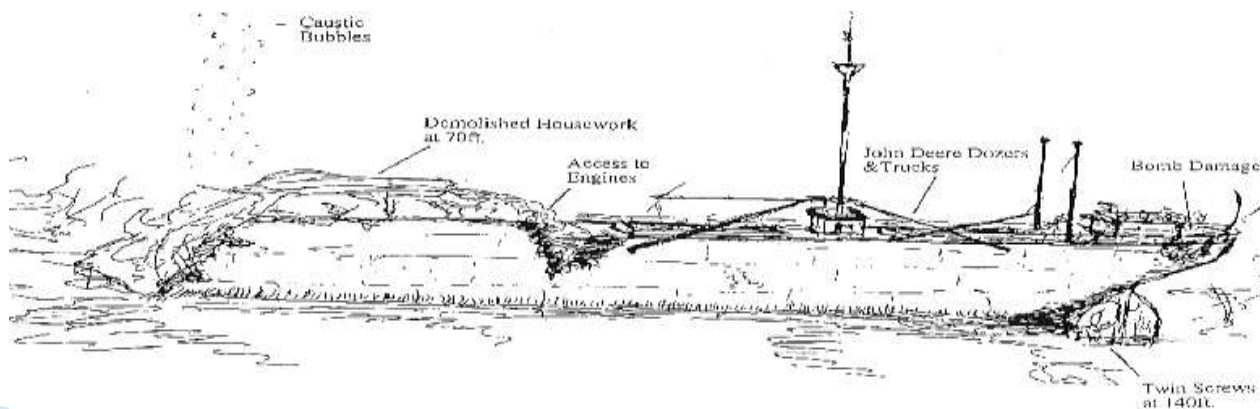


The Hoki Maru

This captured New Zealand vessel (M/V Hauraki) sunk upright with a slight list to port. Except for the bow & forecastle the fore ship was destroyed by an aviation gasoline explosion. The midship & bridge are devastated but contain pockets of interesting artifacts. The aft holds contain an assortment of construction equipment & supplies. Caterpillar tractors, tow tractor, stack bed trucks, dump trucks, steam roller & a motor scraper are on the two levels of #5 hold. Bombs & their fuses, aircraft engines & propeller blades, ship propeller blades, navigation light lens, acid carboys & oil/gasoline drums are in #4. Skin sting/burn has been reported in the bottom of this hold.



Depth			Size	
Superstructure	110 ft.	33 m.	Length	450 ft./136 m.
Deck	150 ft.	45 m.	Gross Tonnage:	7,112 tons
Bottom	175 ft.	53 m.		



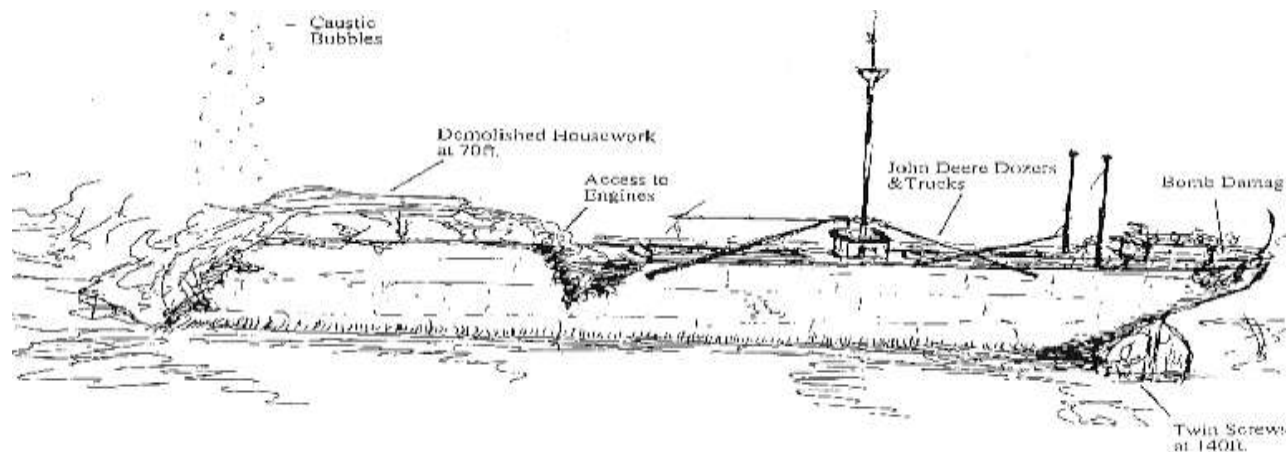
The Hoyo Maru

The Hoyo Maru is a large tanker that capsized and now rests upside down on the gun and midship superstructure. The wreck was under repair for a torpedo hit but bomb damage caused the sinking. It's possible to swim underneath and look up at the deck with pipes & valves. The flat bottom of the wreck is inviting to coral growth and appears as a very large reef with plenty of hard coral and fish.



Depth			Size	
Hull	11 ft.	3 m.	Length	475 ft.
Bottom	50-125 ft.	36 m.	Gross Tonnage:	8,691 tons

Details: Upside down in 2 parts



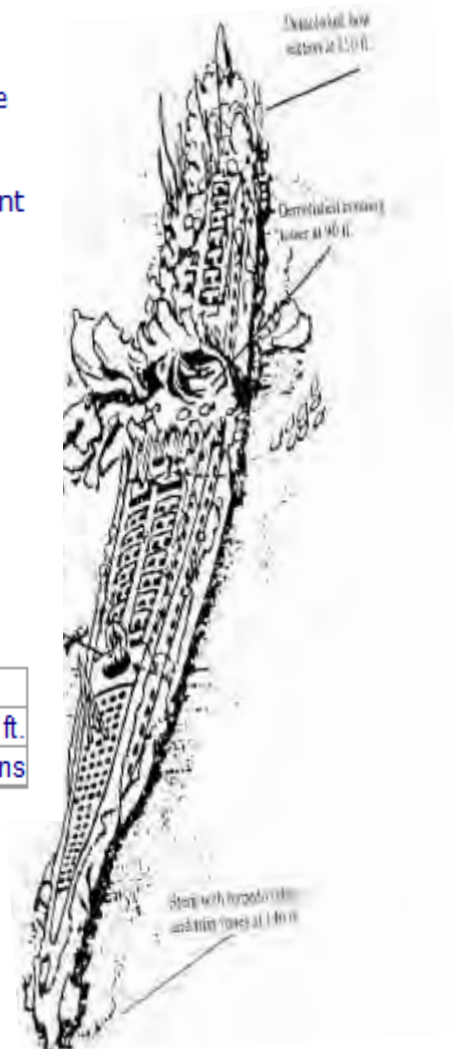
The I-169 Submarine

While replenishing fuel & supplies in April 1944, a warning of an American air raid sent this submarine to the bottom to wait until the raid was over. The sub failed to resurface and investigation by a diver found a storm ventilation tube open and the control room flooded. Salvage operations failed and the entire crew perished. The Japanese 6th fleet command blew up the I-169 with depth charges to prevent its being compromised by impending American invasion forces.

According to Klaus Lindemann's *Hailstorm over Truk Lagoon* guide, "points of interest on this ship are: aftship with conning tower, sagged to port. Cables forward were part of degaussing device. Large double exhaust systems, two access hatches, tripod mast. Propellers heavily damaged."



Depth		Size	
Bottom	144 ft.	40 m.	336 ft.
		Displacement: 1,400 tons	



The Kansho Maru

This passenger/cargo ship sunk upright with a 15/20 degree list to port. The vessel was under repair at that time & there is little to be found in the holds. Many artifacts, however, can be found on the bridge & superstructure. The main attraction is the engine room which has good ambient light & is relatively easy to access. Penetrating to the lower engine room requires special skill. It is here that wrench/spanner sets, mounted on both the fore & aft bulkheads, can be seen.

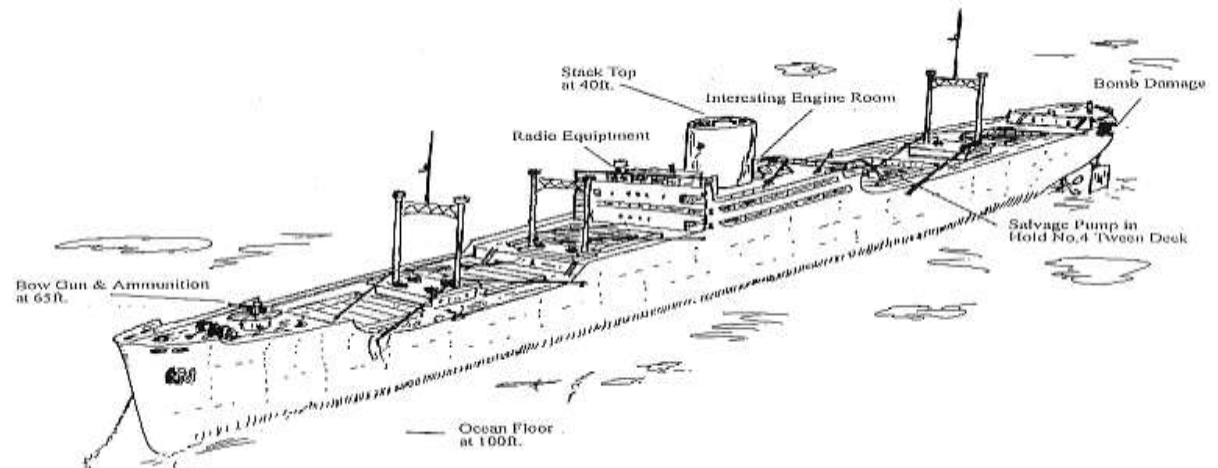


Depth

Superstructure	60 ft.	18 m.
Deck	80 ft.	24 m.
Bottom	130 ft.	35 m.

Size

Length	384 ft.	116 m.
Gross Tonnage:	4,862 tons	



The Nippo Maru

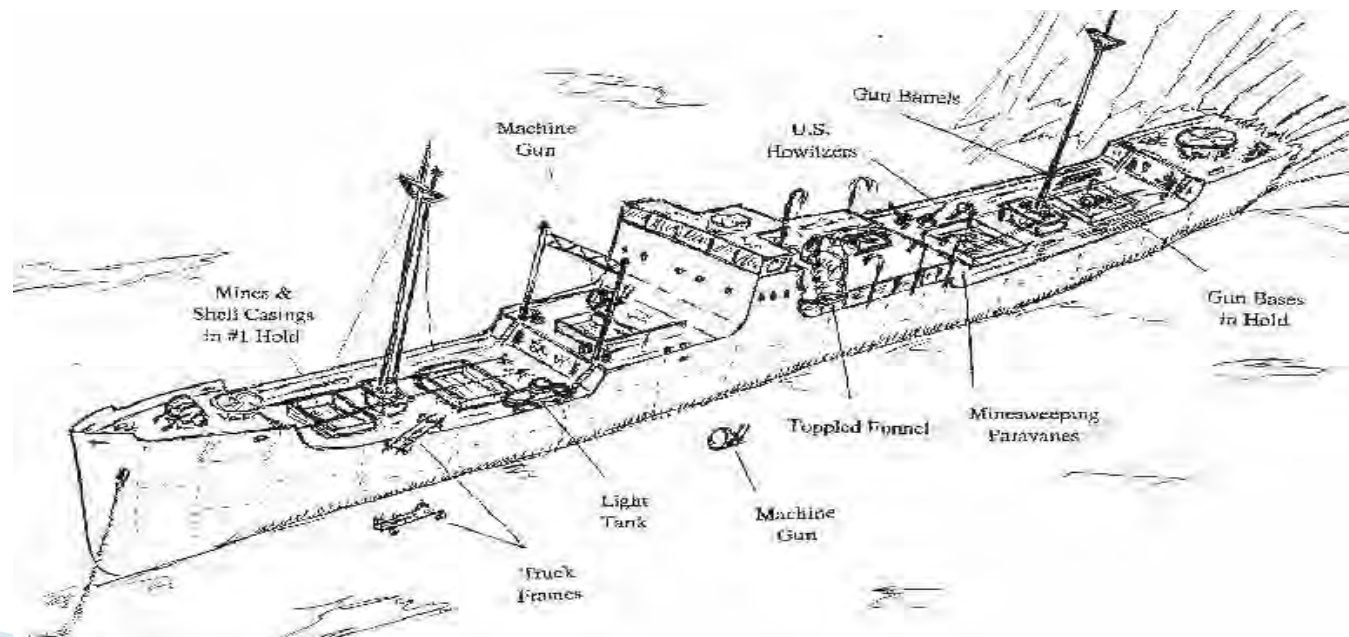
This cargo ship served as a Naval Auxiliary Water Carrier & sank upright with a slight list to port. Deck cargo consists of trucks & a battle tank forward of the bridge, with four light anti-tank guns aft. A full battery of 5 in./12 cm. guns rest in the aft hold. This has one of the most picturesque bridges in Truk. The helm & telegraph are both set well forward & provide an outstanding photo opportunity.



Depth		
Superstructure	100 ft.	30 m.
Deck	130 ft.	40 m.
Bottom	165 ft.	50 m.

Size		
Length	353 ft	106 m.
Gross Tonnage:	3,764 tons	

Details: Resting upright on an even keel.



The Rio de Janeiro Maru

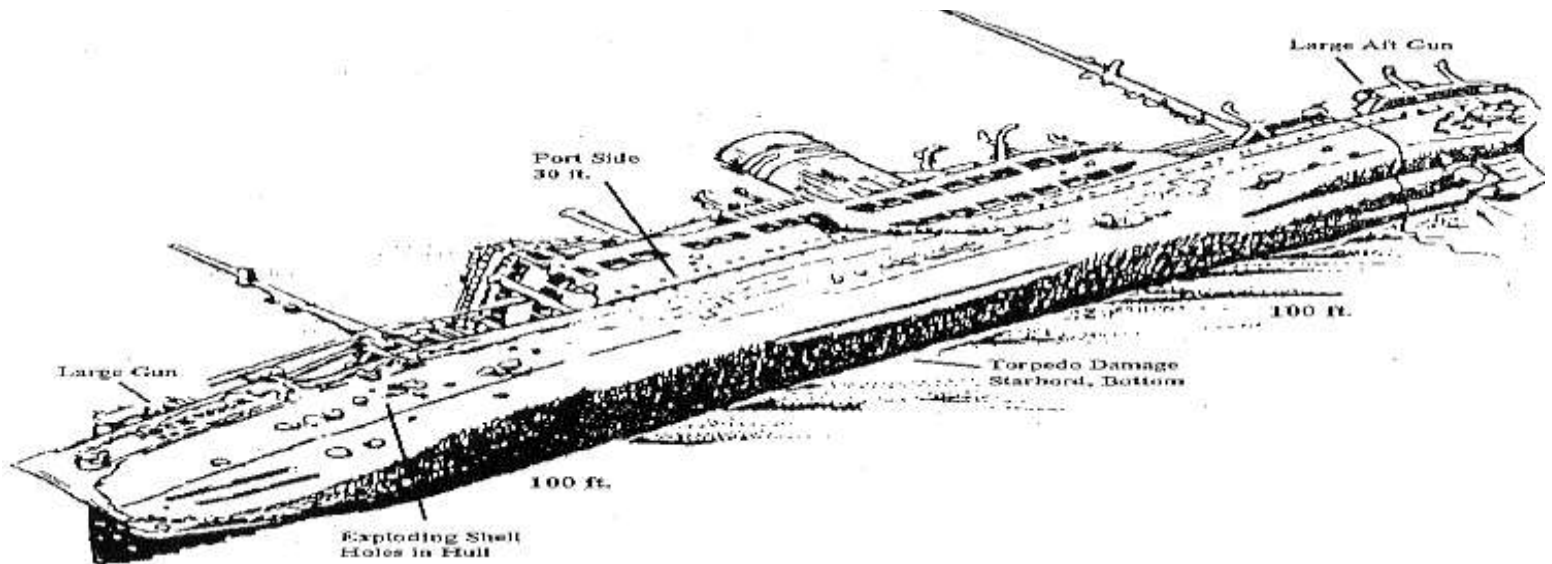
This passenger liner, used as a transport & sub tender, rests on its starboard side. Its on an incline with the stern deeper than the bow. A twin engine ship, the screws & rudder offer an excellent photo opportunity, as does the large 6 in/15 cm stern gun. The raised letter name below the stern rail is still visible. Cargo includes coastal defense guns, oil/gasoline drums, & a hold of beer bottles. The engine room is large to accommodate the twin engines but requires special skills to penetrate.



Depth		
Hull	40-80 ft.	12-24 m.
Bottom	115 ft.	35 m.

Size		
Length	463 ft.	142 m.
Gross Tonnage:	9,626 tons	

Details: Lies on her starboard side about 400-500 yards from shore on the east side of Uman Island.

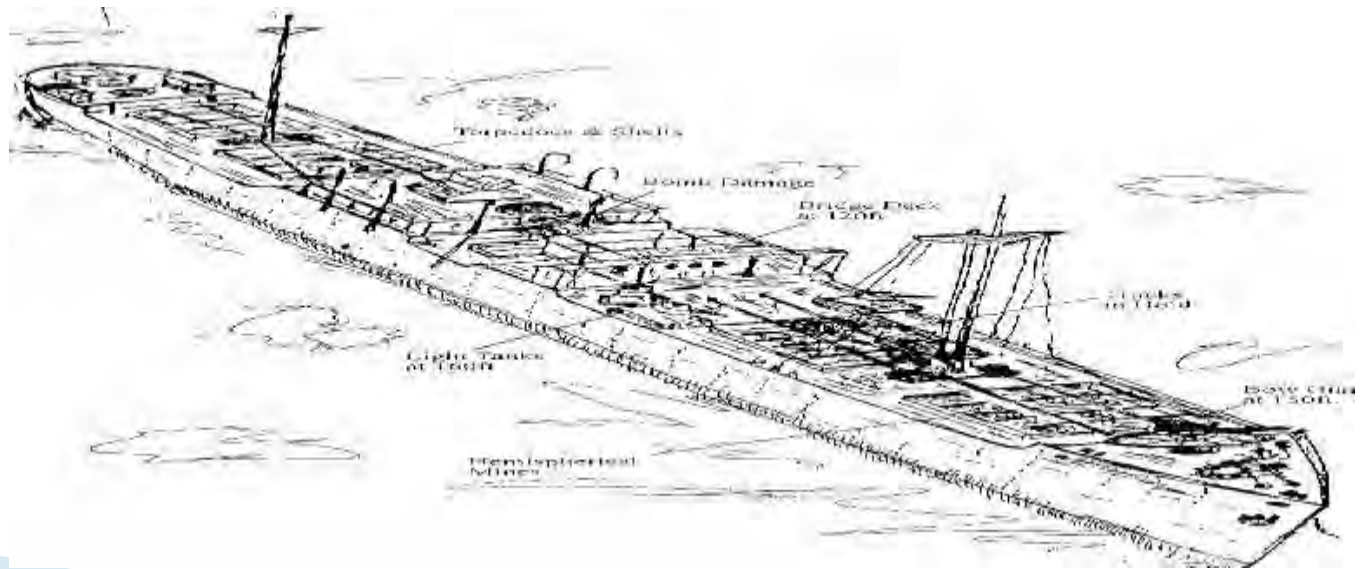


The San Francisco Maru

This passenger/cargo ship sunk upright, fully loaded with cargo & thus is often called 'The Million Dollar Wreck'. Deck cargo includes both trucks & battle tanks. Hold cargo includes mines, torpedoes, bombs, artillery, anti-tank, & small arms munitions, aircraft engines & parts & oil/gasoline drums. Many artifacts remain in the bridge area.



Depth			Size		
Superstructure	150 ft.	45 m.	Length	385 ft.	116 m.
Deck	165 ft.	50 m.	Gross Tonnage:	5,831 tons	
Bottom	200-210/ft.	63 m.			



The Sankisan Maru

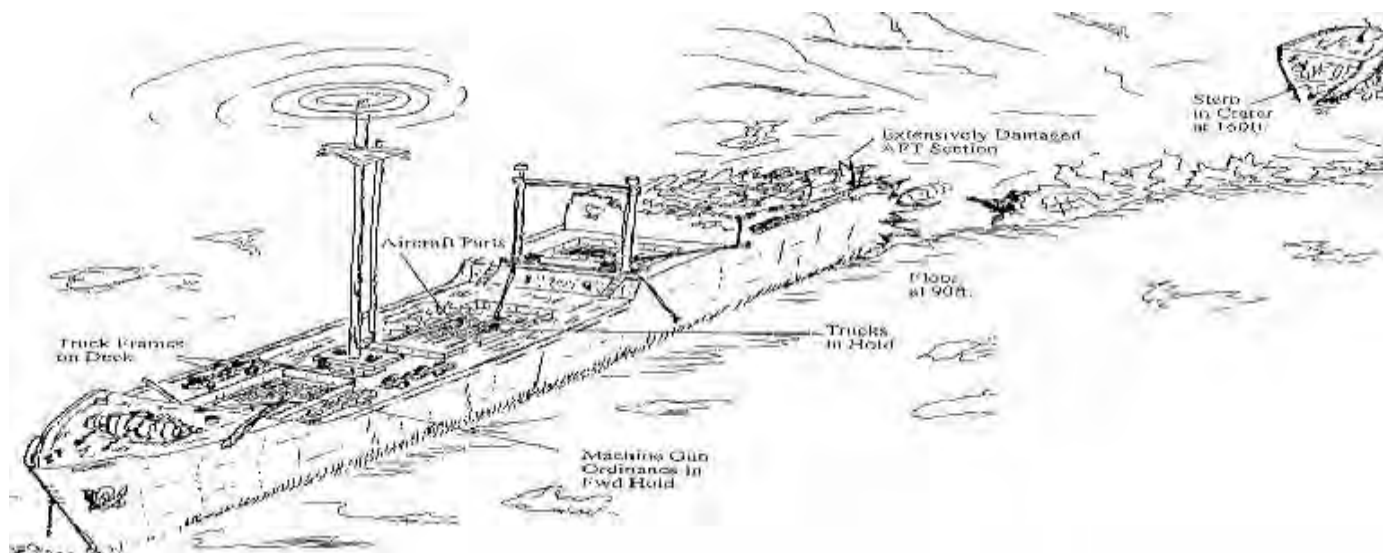
The Sankisan Maru is a freighter that contained aircraft engines, medical supplies & several trucks. This is a popular dive and frequently visited. The masts contain heavy growth of soft coral and large anemones can be found anchored to debris on the deck. A dive between 50-80 feet is easily managed by divers and it's protected location in the lagoon makes it a good dive even during bad weather.



Depth		
Superstructure		
Deck	50 ft.	17 m.
Bottom	80 ft.	26 m.

Size		
Length	367 ft.	112 m.
Gross Tonnage:	4,776 tons	

Details: Upright and relatively intact. The stern was blown off the ship.



The Shinkoku Maru

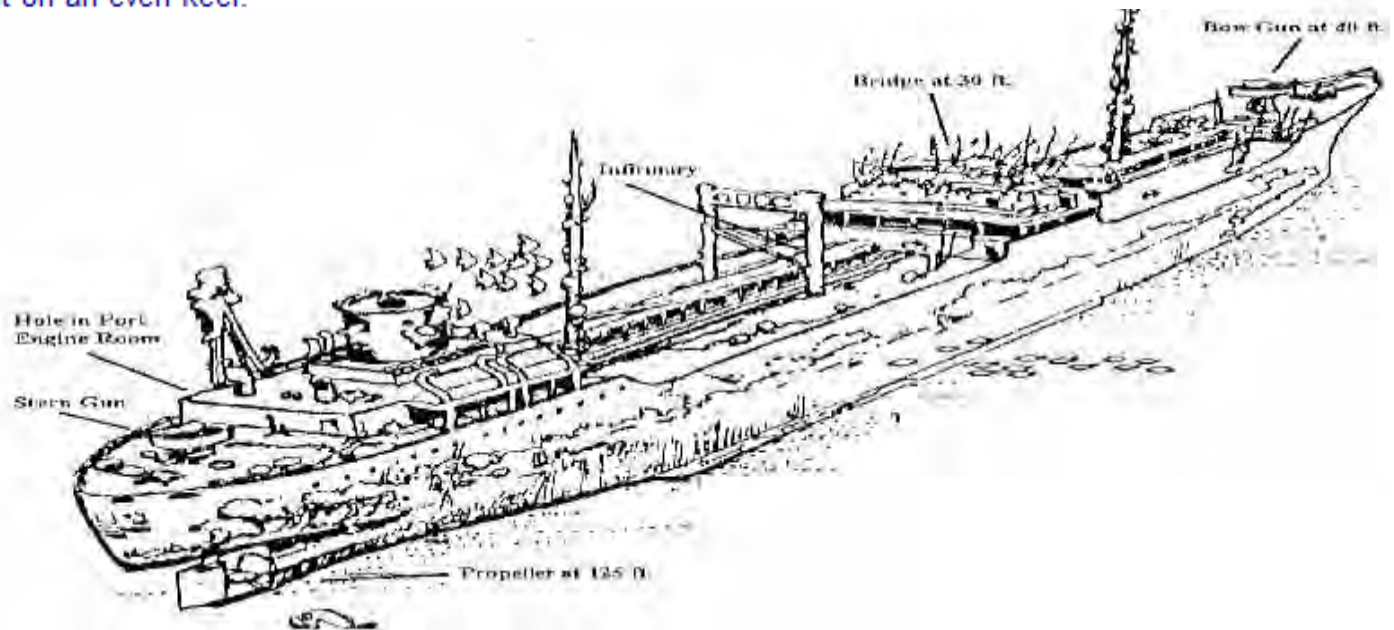
Another wreck with outstanding soft coral growth and anemone, the Shinkoku Maru is high on the list of wrecks to dive! The bow gun is loaded with soft & hard coral of every color imaginable. Tiny, brightly colored fish swarm over every inch of the ship. The bridge still holds three engine telegraphs on the bridge and the sick bay contains two operating table and many medicine bottles.



Depth		
Superstructure	40 ft.	12 m.
Deck	65 ft.	20 m.
Bottom	125 ft.	38 m.

Size		
Length	500 ft.	152 m.
Gross Tonnage:	10,020 tons	

Details: Resting upright on an even keel.

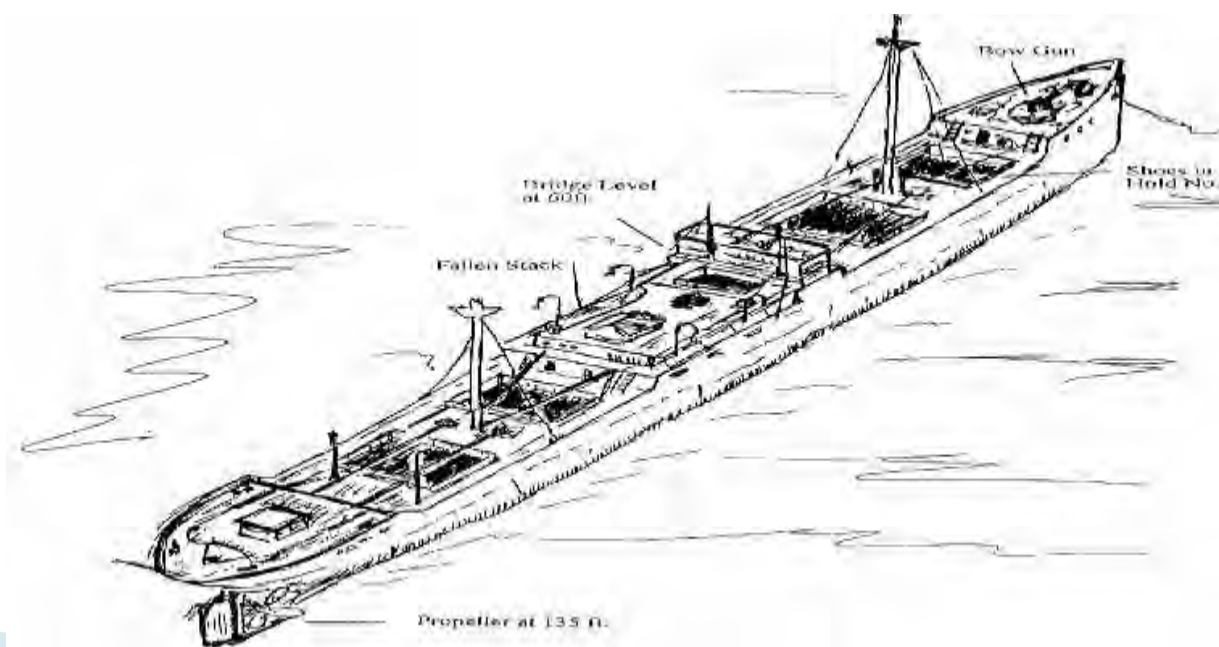


The Unkai Maru No. 6

This is an old freighter, resting upright on an even keel. All holds are empty, except some coal aft. The masts are standing, stack broken off. Superstructure, engine room, forecastle and poop are accessible. Originally called "The Venus", the ship's bell still bears that name.



Depth			Size	
Superstructure	80 ft.	24 m.	Length	305 ft./93 m.
Deck	100 ft.	30 m.	Gross Tonnage:	3,220 tons
Bottom	130 ft.	40 m.		



The Yamagiri Maru

A large combined freighter/passenger liner, the Yamagiri is lying on her port side. The wreck is fairly intact with the superstructure and pilot house interesting and accessible. Hold No. 5 contains 35.6cm (14") shells for second-line Japanese battleships, a steamroller and construction equipment.



Depth		
Superstructure	30-50 ft.	9-18 m.
Hull		
Bottom	110 ft.	34 m.

Size		
Length	439 ft.	133 m.
Gross Tonnage:	6,438 tons	

